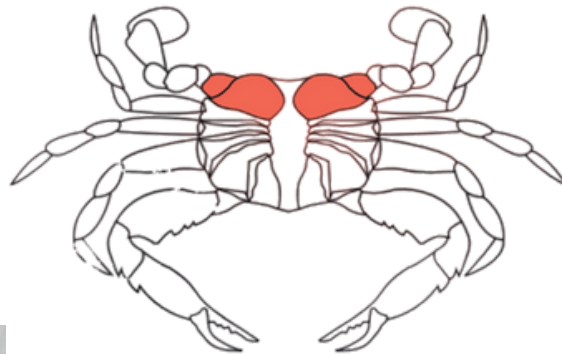


PRODUCTS

JUMBO "Portunus Segnis"



Our JUMBO consists of the large two muscles connected to the swimming legs, it's the most extensive and most expensive crabmeat, it presents a delicate flavor, bright white color, and meaty texture.



• DfcXi Wı-bZfa Uıcb

CLASSIFICATION: Shellfish Prepared/Processed (BIO FOOD NO ADDITIVE)

DIMENSIONS (H*W*D) : 20*25 the vacuum bag

WEIGHT GROSS/NET: 1 LB/1.1 LB

ORIGIN: Tunisia

STORAGE TEMPS: -18C /0F

PALLET: 1.00*1.20*1.96 M

SHELF LIFE: 24 months - stored in -18C/0F

SERVING PER CONTAINER: 2OZ

• Features and Benefits

Features:

Better flavor and texture" Virtually dependable supply" Consistent number of pieces (10 small pieces tolerance) **Serving Suggestions:** READY TO' I G9. Keep refrigerated.

Storage: KEEP REFRIGERATED-18C

• Allergens

Free From: Peanuts, Tree Nuts, Eggs, Milk, Fish, Soy, Wheat, Sesame Seeds, Carrots, S02 & Sulphites.

Contains: Crustaceans

Nutrition Facts

Serving Size 2 oz (56g)
Servings Per Container 8

Amount Per Serving			
Calories	50	Calories from Fat	10
		% Daily Value*	
Total Fat	1g		2%
Saturated Fat	0g		0%
Trans Fat	0g		
Cholesterol	55 mg		18%
Sodium	160 mg		7%
Total Carbohydrate	0g		0%
Dietary Fiber	0g		0%
Sugars	0g		
Protein	11g		
Vitamin A	0%	Vitamin C	4%
Calcium	6%	Iron	2%

*Percent Daily Values are based on a 2,000 calorie diet.

PRODUCED UNDER STRICT HACCP REGULATION .

100% NATURAL PRODUCT

• Nutrition and Ingredients



Nutrition Facts

Serving Size 2 ozs
Servings Per Container 8

Amount Per Serving

Calories 50 Calories from fat 10

% Daily Value*

Total Fat 1 g	2 %
Saturated Fat 0 g	0 %
Trans Fat 0 g	
Cholesterol 55 mg	18 %
Sodium 160 mg	7 %
Total Carbohydrate 0 g	1.17 %
Dietary Fiber 0 g	0 %
Sugars 0 g	
Protein 11 g	21 %
Vitamin A	0 %
Vitamin C	4 %
Calcium	6 %
Iron	2 %

(-) Information is currently not available for this nutrient.

* Percent Daily Values are based on a 2,000 calorie diet. Your daily values may be higher or lower depending on your calorie needs:**

** Percent Daily Values listed below are intended for adults and children over 4 years of age. Foods represented or purported to be for use by infants, children less than 4 years of age, pregnant women, or lactating women shall use the RDI's that are specified for the intended group provided by the FDA.

	Calories:	2,000	2,500
Total Fat	Less than	65g	80g
Sat. Fat	Less than	20g	25g
Cholesterol	Less than	300mg	300mg
Sodium	Less than	2400mg	2400mg
Potassium		3500mg	3500mg
Total Carbohydrate		300mg	375mg
Dietary Fiber		25mg	30mg

Calories per gram:

Fat 9 • Carbohydrate 4 • Protein 4

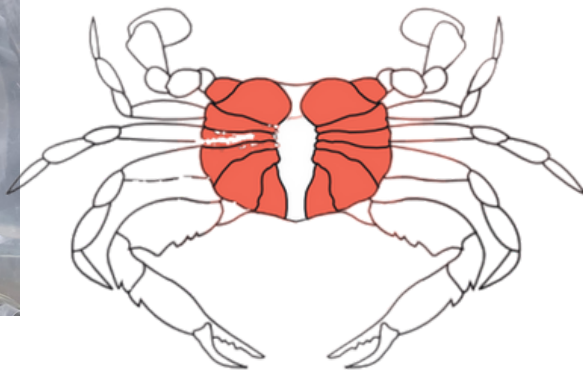
Representation of label. ONCE DEFROSTED DO NOT REFREEZE

Child Nutrition Label: NO

Ingredients: May contain shell particles. ALL-NATURAL. Steamed from live trap-caught crabs.

PRODUCTS

LUMP "Portunus Segnis"



Our Lump consists of white body meat topped with lump. Available year round.



• Product Information

CLASSIFICATION: Shellfish Prepared/Processed(BIO FOOD NO ADDITIVE)

DIMENSIONS (H*W*D) : 20*25 The vacuum bag

WEIGHT GROSS/NET: 1 LB/1.1 LB

ORIGIN: Tunisia

STORAGE TEMPS: -18C /0F

PALLET: 1.00*1.20*1.96 M

SHELF LIFE: 24 months - stored in -18C/0F

SERVING PER CONTAINER: 2OZ

• Features and Benefits

Features: Preparation and Cooking

Better flavor and texture. Virtually dependable supply. Consistent number of pieces (10 small pieces tolerance). **Serving Suggestions:** READY TO USE. Keep Refrigerated.

Storage: KEEP REFRIGERATED-18C

• Allergens

Free From: Peanuts, Tree Nuts, Eggs, Milk, Fish, Soy, Wheat, Sesame Seeds, Carrots, S02 & Sulphites.

Contains: Crustaceans

Nutrition Facts

Serving Size 2 oz (56g)

Servings Per Container 8

Amount Per Serving

Calories	50	Calories from Fat	10
		% Daily Value*	

Total Fat	1g	2%
-----------	----	----

Saturated Fat	0g	0%
---------------	----	----

Trans Fat	0g	
-----------	----	--

Cholesterol	55 mg	18%
-------------	-------	-----

Sodium	160 mg	7%
--------	--------	----

Total Carbohydrate	0g	0%
--------------------	----	----

Dietary Fiber	0g	0%
---------------	----	----

Sugars	0g	
--------	----	--

Protein	11g	
---------	-----	--

Vitamin A	0%	Vitamin C	4%
-----------	----	-----------	----

Calcium	6%	Iron	2%
---------	----	------	----

*Percent Daily Values are based on a 2,000 calorie diet.

PRODUCED UNDER STRICT HACCP REGULATION .

100% NATURAL PRODUCT

• Nutrition and Ingredients



Nutrition Facts

Serving Size 2 ozs	
Servings Per Container 8	
Amount Per Serving	
Calories 50	Calories from fat 10
	% Daily Value*
Total Fat 1 g	2 %
Saturated Fat 0 g	0 %
Trans Fat 0 g	
Cholesterol 55 mg	18 %
Sodium 160 mg	7 %
Total Carbohydrate 0 g	1.17 %
Dietary Fiber 0 g	0 %
Sugars 0 g	
Protein 11 g	21 %
Vitamin A	0 %
Vitamin C	4 %
Calcium	6 %
Iron	2 %

(-) Information is currently not available for this nutrient.

* Percent Daily Values are based on a 2,000 calorie diet. Your daily values may be higher or lower depending on your calorie needs:**

** Percent Daily Values listed below are intended for adults and children over 4 years of age. Foods represented or purported to be for use by infants, children less than 4 years of age, pregnant women, or lactating women shall use the RDI's that are specified for the intended group provided by the FDA.

	Calories:	2,000	2,500
Total Fat	Less than	65g	80g
Sat. Fat	Less than	20g	25g
Cholesterol	Less than	300mg	300mg
Sodium	Less than	2400mg	2400mg
Potassium		3500mg	3500mg
Total Carbohydrate		300mg	375mg
Dietary Fiber		25mg	30mg

Calories per gram:

Fat 9 • Carbohydrate 4 • Protein 4

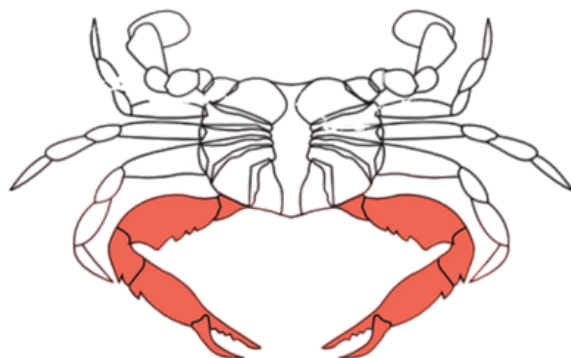
Representation of label. ONCE DEFROSTED DO NOT REFREEZE

Child Nutrition Label: NO

Ingredients: May contain shell particles. ALL-NATURAL. Steamed from live trap-caught crabs.

PRODUCTS

SUPER CLAW "Portunus Segnis"



Our Super Claw meat consists of the totality of a claw meat (one piece). The dark pink meat that comes from the claws of the crab.

• Product Information

CLASSIFICATION: Shellfish Prepared/Processed (BIO FOOD NO ADDITIVE)

DIMENSIONS (H*W*D) : 20*25 The vacuum bag

WEIGHT GROSS/NET: 1 LB/1.1 LB

ORIGIN: Tunisia

STORAGE TEMPS: -18C /0F

PALLET: 1.00*1.20*1.96 M

SHELF LIFE: 24 months - stored in -18C/0F

SERVING PER CONTAINER: 2OZ

• Features and Benefits

Features: Preparation and Cooking

Better flavor and texture. Virtually dependable supply. Consistent number of pieces (10 small pieces tolerance). **Serving Suggestions:** READY TO USE.

Storage: KEEP REFRIGERATED-18C

• Allergens and Diet

Free From: Peanuts, Tree Nuts, Eggs, Milk, Fish, Soy, Wheat, Sesame Seeds, Carrots, S02 & Sulphites.

Contains: Crustaceans

Nutrition Facts

Serving Size 2 oz (56g)

Servings Per Container 8

Amount Per Serving

Calories 50 Calories from Fat 10

% Daily Value*

Total Fat 1g 2%

Saturated Fat 0g 0%

Trans Fat 0g

Cholesterol 55 mg 18%

Sodium 160 mg 7%

Total Carbohydrate 0g 0%

Dietary Fiber 0g 0%

Sugars 0g

Protein 11g

Vitamin A 0% Vitamin C 4%

Calcium 6% Iron 2%

*Percent Daily Values are based on a 2,000 calorie diet.

PRODUCED UNDER STRICT HACCP REGULATION .

100% NATURAL PRODUCT



- Nutrition and Ingredients**



Nutrition Facts

Serving Size 2 ozs
Servings Per Container 8

Amount Per Serving

Calories 50 Calories from fat 10

% Daily Value*

Total Fat 1 g	2 %
Saturated Fat 0 g	0 %
Trans Fat 0 g	
Cholesterol 55 mg	18 %
Sodium 160 mg	7 %
Total Carbohydrate 0 g	1.17 %
Dietary Fiber 0 g	0 %
Sugars 0 g	
Protein 11 g	21 %
Vitamin A	0 %
Vitamin C	4 %
Calcium	6 %
Iron	2 %

(-) Information is currently not available for this nutrient.

* Percent Daily Values are based on a 2,000 calorie diet. Your daily values may be higher or lower depending on your calorie needs:**

** Percent Daily Values listed below are intended for adults and children over 4 years of age. Foods represented or purported to be for use by infants, children less than 4 years of age, pregnant women, or lactating women shall use the RDI's that are specified for the intended group provided by the FDA.

	Calories:	2,000	2,500
Total Fat	Less than	65g	80g
Sat. Fat	Less than	20g	25g
Cholesterol	Less than	300mg	300mg
Sodium	Less than	2400mg	2400mg
Potassium		3500mg	3500mg
Total Carbohydrate		300mg	375mg
Dietary Fiber		25mg	30mg

Calories per gram:

Fat 9 • Carbohydrate 4 • Protein 4

Representation of label. ONCE DEFROSTED DO NOT REFREEZE

Child Nutrition Label: NO

Ingredients: May contain shell particles. ALL-NATURAL. Steamed from live trap-caught crabs.

PRODUCTS

FROZEN BLUE CRAB CLUSTER



- **1/3 Crab Clusters**

The 1/3 blue crab clusters are a frozen seafood product made from premium top-quality blue crabs. These clusters are composed of meat from the body and legs of the crab and are known for their sweet and succulent flavor. They have been carefully cleaned and processed to maintain their fresh taste. Large and delicious.



- **3/5 Crab Clusters**

The 3/5 blue crab clusters are a frozen seafood product made from premium top-quality blue crabs. These clusters consist of meat from the body and legs of the crab, which is known for its sweet and succulent flavor. The clusters are carefully cleaned and processed before being frozen, preserving their fresh taste and nutritional value.



- **5/7 Crab Clusters**

The 5/7 blue crab clusters are a frozen seafood product made from premium top-quality blue crabs. These clusters consist of meat from the body and legs of the crab, which is known for its sweet and succulent flavor. The clusters are carefully cleaned and processed before being frozen, preserving their fresh taste and nutritional value.

PRODUCTS

SEAFOOD

Our company is committed to providing our clients with a wide range of high-quality seafood products that meet their specific needs and preferences. We understand that every client is unique, and we are dedicated to offering personalized service that takes into account individual requirements. Whether our clients are looking for fresh or frozen seafood, we can provide a wide range of products, including shrimp, octopus, fish, clams and other shellfish. Our team works closely with our clients to understand their preferences and requests, and we are always ready to source and supply the seafood products they need.



COMING SOON

Our future project aims to create a high-quality **pasteurized crab meat** product that meets the demands of consumers who value both convenience and safety. We will utilize the latest pasteurization technologies to ensure that our crab meat is free from harmful microorganisms while preserving its natural flavor and texture. Our team will work closely with local crab fishermen to ensure a sustainable and traceable supply chain. Our pasteurized crab meat will be packaged in convenient and eco-friendly containers, making it easy for customers to enjoy fresh and delicious crab meat in salads, sandwiches, and other dishes. Through our commitment to quality and sustainability, we aim to become a leading provider of pasteurized crab meat in the market.

